

Management system as per  
执行以下标准

ISO 9001: 2015  
ISO 14001: 2015



Website WeChat

ENGEL MACHINERY (CHANGZHOU) CO., LTD.  
No. 9 Longfan Road, Wujin National Hi-Tech Industrial Zone,  
Changzhou 213166, Jiangsu Province, P.R. China  
tel: +86 519 8159 5300  
fax: +86 519 8159 5388  
e-mail: info@wintec-machines.com

恩格尔注塑机械（常州）有限公司  
中国江苏省常州市武进国家高新技术开发区龙帆路9号  
邮编：213166  
电话：+86 519 8159 5300  
传真：+86 519 8159 5388  
邮箱：info@wintec-machines.com

2024\_04\_GB\_CN/EN

**WINTEC**  
MEMBER OF THE ENGEL GROUP

# t-win SE

HYDRAULIC TWO PLATEN INJECTION MOLDING MACHINE

t-win SE 液压二板注塑机



# Production Locations 全球工厂



ENGEL, as the world's leading supplier of injection molding machines, represents stability and continuity in the industry. As a 100% owned subsidiary of ENGEL, WINTEC will spare no effort to create efficient and stable injection molding machines. At the same time, WINTEC relies on the strength of its parent company and its comprehensive global sales and service network to provide fast and effective after-sales support while ensuring the quality of its products, making it a reliable partner for your successful international development.

ENGEL作为世界领先注塑机供应商,是稳定性和持续性的行业代表。作为ENGEL的全资子公司,WINTEC将不遗余力地打造高效稳定的注塑设备。

同时WINTEC依靠母公司的雄厚实力及健全的全球销售及服务网络,在确保产品品质优良的前提下,能快速有效地提供售后服务支持,是您国际化发展进程上可靠的合作伙伴。

## ENGEL GROUP

9 PRODUCTION PLANTS  
9 个生产工厂

30 SUBSIDIARIES  
30 个分支机构

60 REPRESENTATIVES  
60 个代表处



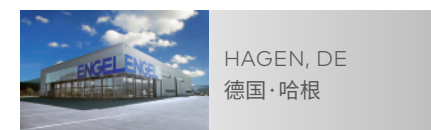
YORK, US  
美国·约克



DIETACH, AT  
奥地利·迪塔赫



PYUNGTAEK-CITY, KR  
韩国·平泽市



HAGEN, DE  
德国·哈根



SCHWERTBERG, AT  
奥地利·施韦特贝格



SHANGHAI, CN  
中国·上海



KAPLICE, CZ  
捷克·卡普利采



ST. VALENTIN, AT  
奥地利·圣瓦伦丁



CHANGZHOU, CN  
中国·常州



Located in Changzhou, Jiangsu Province, China, WINTEC is the second brand established by ENGEL Group in 2014, insisting on high quality products and reliable services for the commodity segment of injection molding.

After several years of sustainable growth and continuous development of our portfolio, WINTEC rollout to Europe in 2020. The worldwide sales and service network of the ENGEL Group provides you with high quality injection molding machines for standard applications while ensuring fast and effective after-sales support.

WINTEC位于中国江苏省常州市，是ENGEL集团于2014年创立的第二品牌，坚持以高品质的产品和可信赖的服务为宗旨。

历经数年的持续增长及产品组合的不断发展，WINTEC于2020年开拓欧洲市场，自此完成了其全球推广的进程。遍布全球的销售及服务网络，为您提供高品质标准应用注塑机的同时，也确保了快速有效的售后支持。

**Jan  
2013**

Groundbreaking ceremony for the new WINTEC plant  
WINTEC工厂奠基仪式

2013

**Jul  
2014**

First machine delivered to Chinese customers  
第一台WINTEC注塑机交付

2014

2016

**Jun  
2016**

WINTEC rollout to Middle East, Africa and Southeast Asia  
WINTEC拓展中东、非洲及东南亚市场

2018

**May  
2018**

WINTEC rollout to Americas  
WINTEC拓展美洲市场

2020

**Oct  
2020**

WINTEC rollout to Europe  
WINTEC拓展欧洲市场

**Jun  
2022**

Celebration of the 1000th t-win machine delivery  
第1000台t-win交付仪式

2022

# t-win SE

YOUR ADVANTAGES AT A GLANCE

优势一览

## HIGHER PRODUCTIVITY

### 更高的生产效率

The servo hydraulic two-platen t-win is focused on fast and high efficient production. Fast movements, short clamping force build-up time and synchronized locking device movement reduce total cycle time and increase productivity.

伺服液压驱动二板式t-win系列注塑机专注于快速、高效的生产。高速的运动，较短的锁模力建立时间及同步锁紧装置，降低了循环周期，提高了生产效率。

## INCREASED AVAILABILITY

### 更高的可利用率

The reliable and proven design as well as features allow fast access for maintenance and increase machine availability and output.

可靠且久经考验的设计加之稳定的性能，使赢泰注塑机易于维护，从而提高了机器的可利用率 and 产出。

## HIGHER ENERGY EFFICIENCY

### 更高的能源利用率

The servo drive system servowin guarantees fast acceleration and low energy consumption.

伺服驱动系统保证了机器的快速运转，降低了能源消耗。



## SMALLER FOOTPRINT

### 更小的占地空间

The two-platen machine concept allows a compact design for less space requirements.

紧凑的两板式设计为您节省占地空间。

## SMARTER CONTROL UNIT

### 更智能的控制系统

Future-oriented technologies with long-term availability and transformation. Powerful extending function for future challenges. C3 controller keeps you on top of processes that continue to become more and more complex.

面向未来的技术，C3 控制器具备长期的可用性和改造性。强大的扩展功能迎接未来挑战，面对越来越复杂的工艺要求依然立于不败之地。

# Smart Machine 智能机器



Intuitive operation & one-touch operation

一键式直观操作

Self-explanatory navigation

清晰的导航界面

Ergonomic panel

符合人体工学的面板

Future-oriented technologies

面向未来的技术

Assistance systems

辅助系统

Individually, tailored to the operator

个性化操作

# Smart Functions 智能选项

 <p><b>iQ weight control*</b></p> <p>Constant filling under changing conditions 外部环境变化仍保持稳定注塑</p>	 <p><b>Mold parallelism measurement</b></p> <p>Mold parallelism measurement and clamping force optimization 模具平行度测量及锁模力优化</p>	 <p><b>Mold protection*</b></p> <p>Precision monitoring during the whole injection molding process 精密监测注塑全过程</p>
--	--	---



ecograph\*

Display of energy consumption for last and current cycle.

实时显示当前及上一循环的能耗



ecobalance\*

Intercept of power peaks and uniform distribution of the total energy demand across the cycle.

拦截功率峰值，保持整个周期内总能耗的均匀分布



Micrograph

Recording process parameters for quality control purposes that helps you analyze, optimize and monitor the process.

记录工艺参数，为分析、优化、监测工艺质量提供帮助



Autoprotect injection monitoring\*

Self-learning system for highly sensitive mold protection during injection.

高精度自学习系统确保注射过程中的模具保护



Program parameter limits\*

Specifying the input range for up to 150 parameters individually to prevent setting of illogical or severely deviating.

可设置最多150个独立参数以防逻辑错误或严重偏差



e-help

Information on the most important functions and operations of a system directly at the machine.

直达机器最重要的功能和操作

For more options, please contact regional sales. 更多其他选项，请咨询当地销售人员

\*Optional functions 选配功能

Clamping Unit 锁模单元			t-win SE 6500	t-win SE 10500	t-win SE 14000	t-win SE 18000	t-win SE 27000
Clamping force	锁模力	kN	6500	10500	14000	18000	27000
Opening force (pressure pad)	开模力(高压缸开模)	kN	370	620	760	1000	1600
Opening force (moving cylinder)	开模力(移模缸开模)	kN	192	284	284	393	770
Opening stroke	开模行程	mm	800 - 1350	1000 - 1600	1200 - 1800	1650 - 2350	1900 - 3100
Mold height min.	最小模厚	mm	400	500	600	700	800
Mold height max.	最大模厚	mm	950	1100	1200	1400	2000
Total daylight max.	最大模板间距	mm	1750	2100	2400	3050	3900
Platen size h x v	模板尺寸(水平x垂直)	mm	1380 x 1320	1630 x 1610	1870 x 1960	2290 x 2130	2770 x 2680
Dist. between tie bar h x v	拉杆间距(水平x垂直)	mm	1040 x 910	1270 x 1100	1470 x 1360	1680 x 1520	2000 x 1800
Mold weight max.	最大模具重量	kg	9500	13000	21000	30000	75000
Ejector stroke	顶出行程	mm	250	300	300	300	500
Ejector force	顶出力	kN	105	230	260	260	420
Dry cycle (Euromap 6) · stroke	干周期(Euromap 6) · 行程	sec · mm	3.7 · 700	4.6 · 850	5.1 · 1000	5.7 · 1150	8.3 · 1500
Weight CU	锁模单元净重	t	13.7	23.9	38.8	51.7	99.6

Injection Unit 注射单元			2310			3510			5210			8210			11410			16510		
Screw diameter	螺杆直径	mm	60	70	80	70	80	90	80	90	105	90	105	120	105	120	135	120	135	150
L/D ratio (3-zone screw)	长径比(3段式螺杆)	L/D	20			22			22			22			22			22		
Screw stroke	注射行程	mm	325			370			450			510			550			630		
Injection capacity max.	最大注塑容量	cm <sup>3</sup>	919	1251	1634	1424	1860	2354	2262	2863	3897	3244	4416	5768	4762	6220	7873	7125	9018	11133
Shot weight max. (PS) <sup>①</sup>	最大注射量(PS) <sup>①</sup>	g	845	1151	1503	1310	1711	2166	2081	2634	3585	2984	4063	5307	4381	5722	7243	6555	8297	10242
Screw speed max.	最大螺杆转速	min <sup>-1</sup>	200			220			175			130			95			90		
Plasticizing rate (3-zone screw) <sup>②</sup>	塑化能力(3段式螺杆) <sup>②</sup>	g/s	46.3	68.7	96.5	74.3	101.6	140.0	80.9	111.4	165.9	82.8	123.2	172.8	90.0	126.2	170.4	119.6	161.4	210.8
Injection rate max. <sup>③</sup>	最大注射速率 <sup>③</sup>	cm <sup>3</sup> /s	368	501	654	475	620	785	583	737	1004	655	892	1165	868	1135	1435	1053	1332	1645
Injection rate <sup>④</sup>	注射速率 <sup>④</sup>	cm <sup>3</sup> /s	205	278	364	337	441	558	388	491	668	433	589	769	563	735	930	735	930	1148
Injection pressure	注射压力	bar	2112	1551	1188	2106	1613	1274	1974	1560	1146	2155	1583	1212	2036	1558	1231	1980	1564	1267
Injection pressure max.	最大注射压力	bar	2300	1860	1424	2300	1890	1493	2300	1834	1348	2300	1858	1423	2300	1834	1449	2300	1830	1482
Nozzle stroke	喷嘴行程	mm	600			800			800			800			800			1100		
Nozzle contact force	喷嘴接触力	kN	110			150			150			150			150			150		
Heating wattage (incl. nozzle)	料筒加热功率(包括喷嘴)	kW	21	24	27	23	26	29	26	29	34	45	51	57	51	57	66	65.9	76.9	86.9
Heating zones (incl. nozzle)	加热区(包括喷嘴)		6	6	6	6	6	7	6	7	7	6	6	7	6	7	7	7	7	7
Drive power	驱动功率	kW	53			65			78			110			110			140		
Oil reservoir capacity	油箱容积	l	550			760			760			1100			1100			1600		
Weight IU	注射单元净重	t	4.5			5.7			6.2 - 8.2 <sup>⑤</sup>			9.0			10.3			15.6		

①Values for polystyrene 聚苯乙烯的值

②Theoretical values: at min 80% injection pressure 理论值: (在)最小80%注射压力下

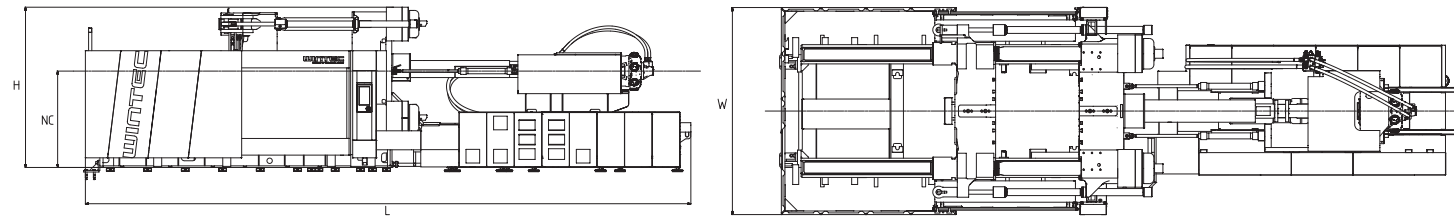
③At max. injection pressure 在最大注射压力时

④Based on clamp - injection unit combination 根据合模和注射单元组合情况而定

All above data only applied to standard machine 所有数据均为机器标准配置参数

Subject to technical alterations 以最新的技术变更数据为准

Injection Unit 注射单元	2310	3510	5210	8210	11410	16510
Screw Diameter 螺杆直径 mm	60 70 80	70 80 90	80 90 105	90 105 120	105 120 135	120 135 150
t-win SE 6500						
t-win SE 10500						
t-win SE 14000						
t-win SE 18000						
t-win SE 27000						

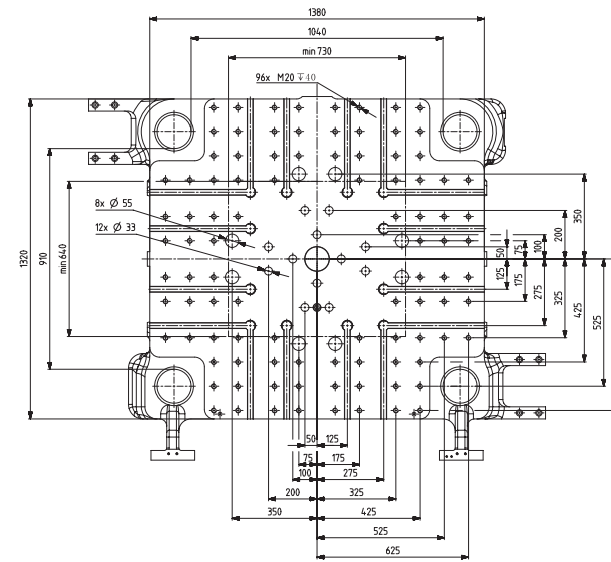


Machine Dimensions 机器尺寸					
锁模单元 CU	注射单元 IU	长 L mm	宽 W mm	高 H mm	喷嘴中心高度 NC mm
t-win SE 6500	2310	7698.5	2528	2720	1400
	3510/5210	8639.5			
t-win SE 10500	3510/5210	9248	2979	2695	1500
	8210/11410	10238			
t-win SE 14000	5210	9665	3181	2858.5	1699.5
	8210/11410	11975			
t-win SE 18000	16510	12286	3511	3060.5	1800
	5210	10335			
t-win SE 27000	8210/11410	11305	5023	3726	2250
	16510	12956			
	11410	13805			
	16510	15456			

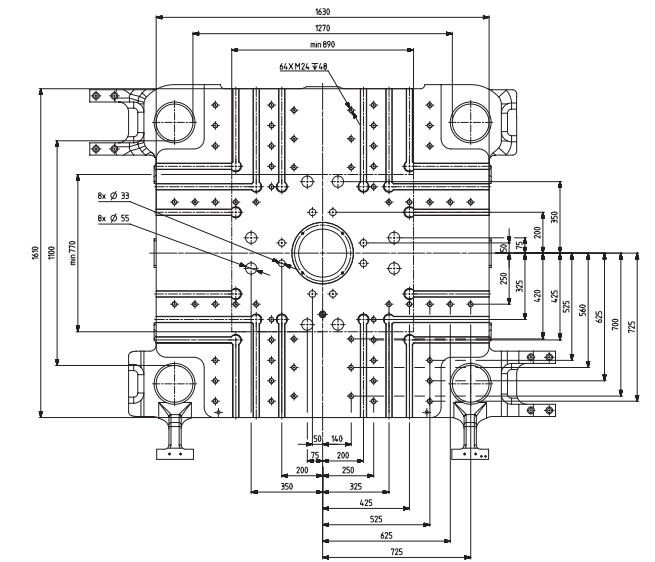
Subject to technical alterations 以最新的技术变更数据为准

### Platen Dimensions 模板尺寸

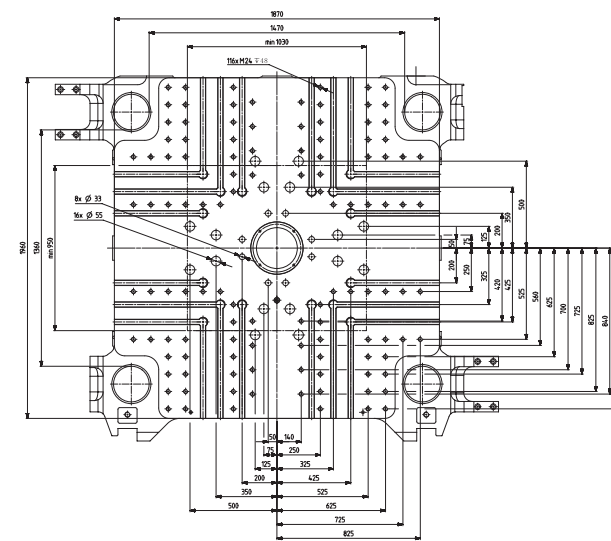
6500 kN



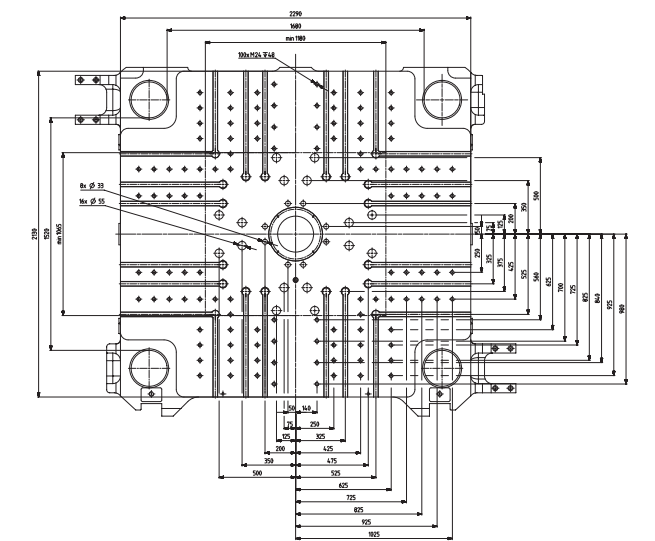
10500 kN



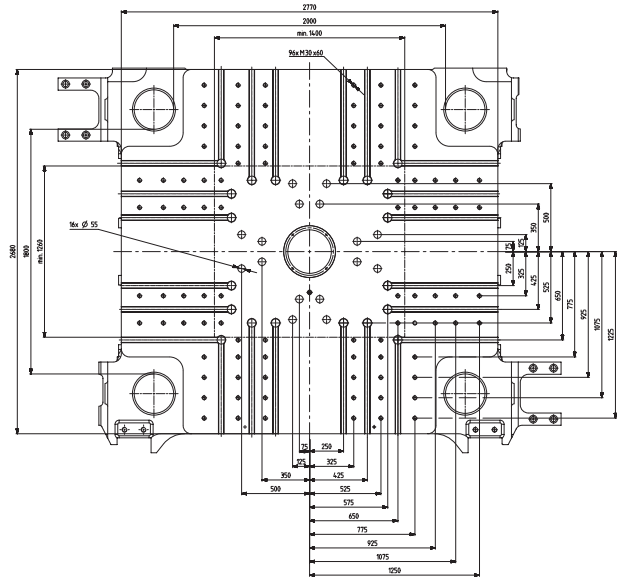
14000 kN



18000 kN



27000 kN



备忘录 / Memo